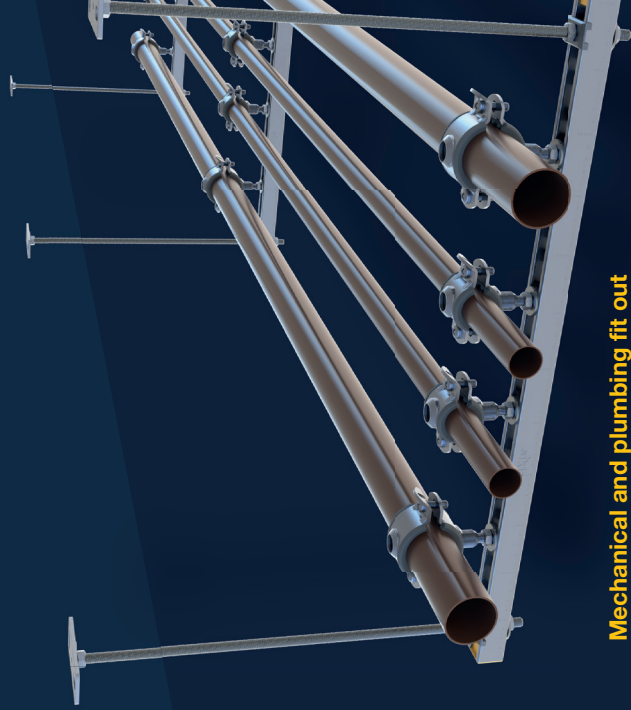
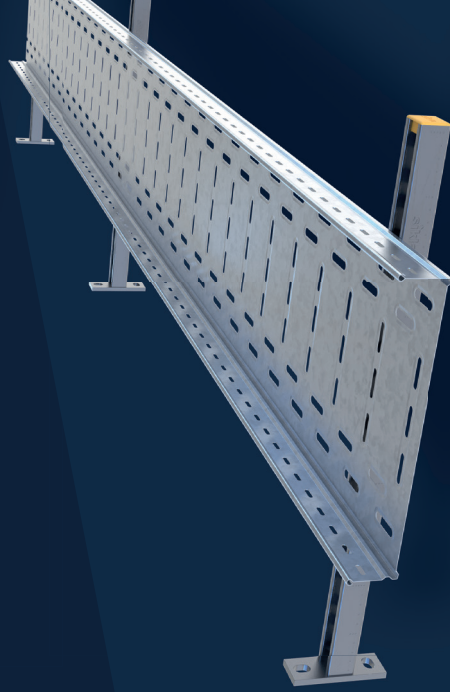


Assembly examples



Mechanical and plumbing fit out
up to 4" water-filled pipes.

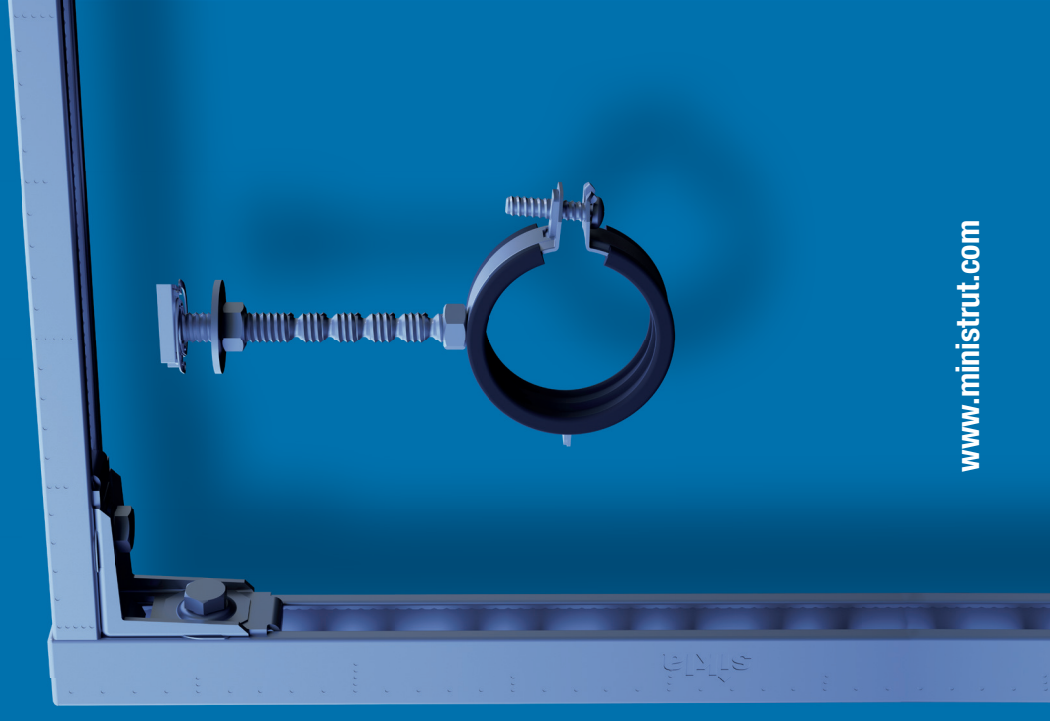


Electrical fit out for all cable baskets
and smaller cable trays

sikla

PRESSIX CC 27

The fastest and
most efficient fixings
for channel assemblies!



sikla

Sikla UK Ltd

Unit 3, Newmarket Court
Kingston Industry
Milton Keynes
MK10 0AG
Tel +44(0)1908 281 052
sikla.co.uk

Sikla Oceania Pty Ltd

5 Craft Street
Canning Vale
WA 6155
Tel +61(0)894562777
sikla.com.au

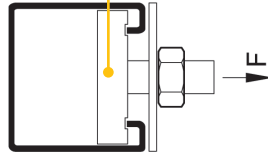
www.ministrut.com

Pressix CC 27

Pressix CC is one of the fastest methods to make steel frames from strut-channel and it is compatible with the generic geometry of this commodity rather than exclusively designed for our own branded channel section.

- ✓ **Fast, safe and simple**
- ✓ **Cuts installation time in half**
- ✓ **Works single-handed**

Intelligent installation for M&E



60% load capacity compared to 41/41
Weight saving up to 75 %

Max. Point carrying capacity

P1000 (41/41/2.5)

$F_{max} = 2.6 \text{ kN}$

CC 27/25

$F_{max} = 1.5 \text{ kN}$

Weight of 3m 554mm insulated copper pipe water-filled

$F = 0.2 \text{ kN}$

Maximum load of 3m 300mm perforated cable tray

$F = 0.6 \text{ kN}$

How it works



1

Position it

Channel nut locks automatically & the rod unit stays in position!



2

Tighten

Adjust & lock the position by tightening the nut!



3

That is it!

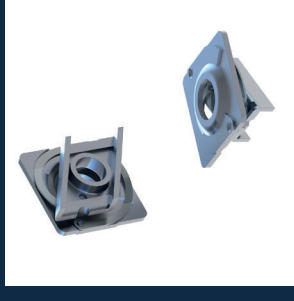
Complete Mini-channel System



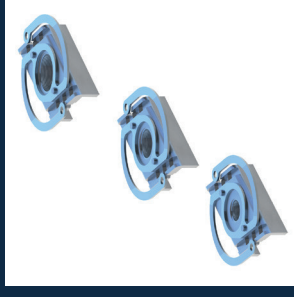
Channels MS 27



Blockset PBS CC 27



Block PB 27 M8 - M10



Speed Nut NT CC 27
M6 - M10



90° Angle Connector
CN CC 27



Cantilever Bracket
AK 27 - 1,25

Find more Pressix CC 27 products on sikla.co.uk and sikla.com.au